









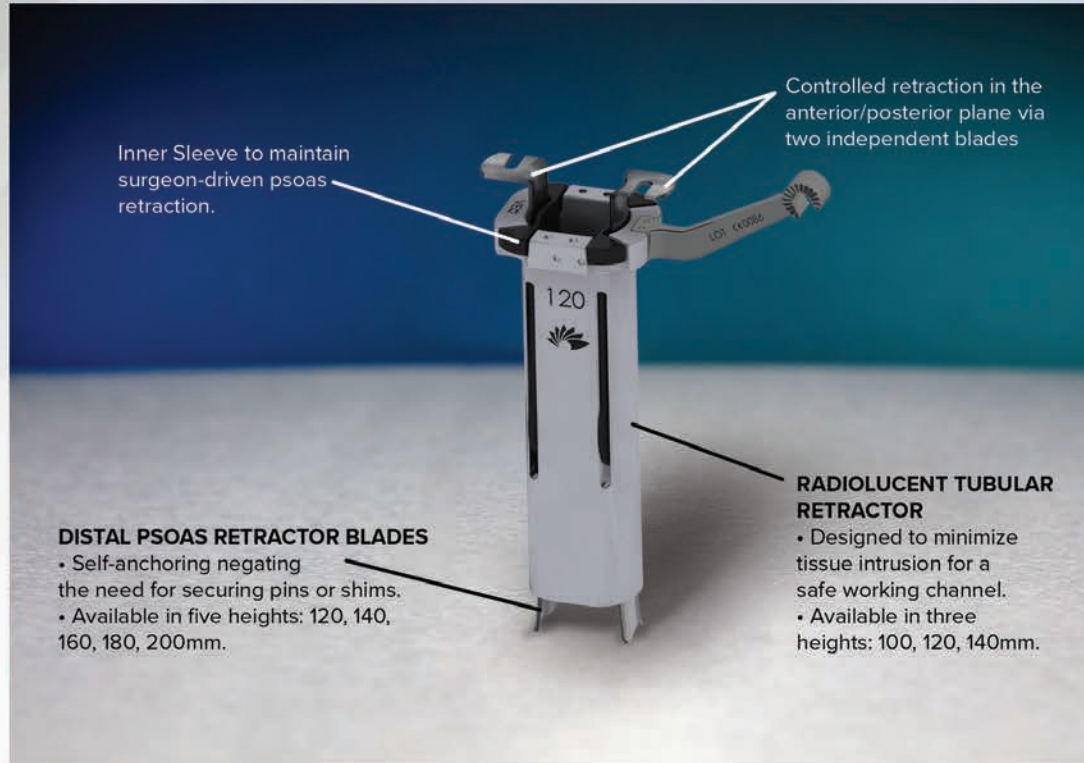
# VEO<sup>®</sup>

## Lateral Access and Interbody Fusion System

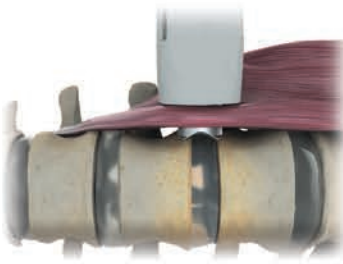
The **ChoiceSpine VEO Lateral Access and Interbody Fusion System** brings clear and direct visualization to lateral fusion surgery. Through a combination of direct psoas visualization and clear lateral fluoroscopic views, VEO is intended to let surgeons focus on the patient, not the product. The VEO direct visualization approach was designed to help minimize iatrogenic trauma to the psoas muscle and the lumbar nerve plexus to help reduce the risk of post-operative complications.

### FEATURES

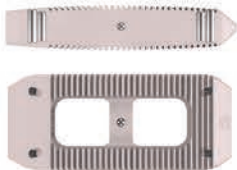
-  Direct visualization of psoas and nerves before dissection
-  Two-stage retraction: First stage retracts body wall/ second stage retracts psoas muscle
-  Limited muscle trauma through psoas splitting
-  Minimal tissue intrusion through the radiolucent tubular retractor
-  Direct visualization of the operative site
-  Unobstructed fluoroscopic views



..... Tiger Shark™ Lateral 3D Printed Ti Interbody Compatible



..... Shallow Docking

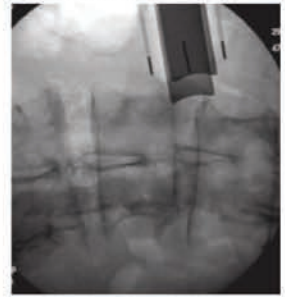


..... Excellent Visibility Under Fluoroscopy

Clear lateral view of the disc space



Unobstructed AP view of the disc space



Propelling Spinal Surgery

400 Erin Drive | Knoxville, TN 37919

865.246.3333 | fax 865.246.3334

[choicospine.com](http://choicospine.com)