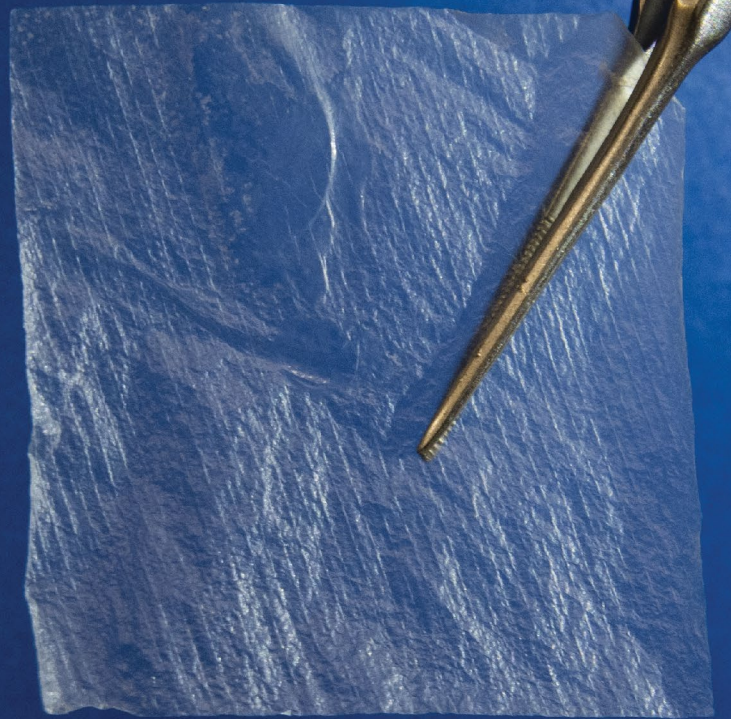
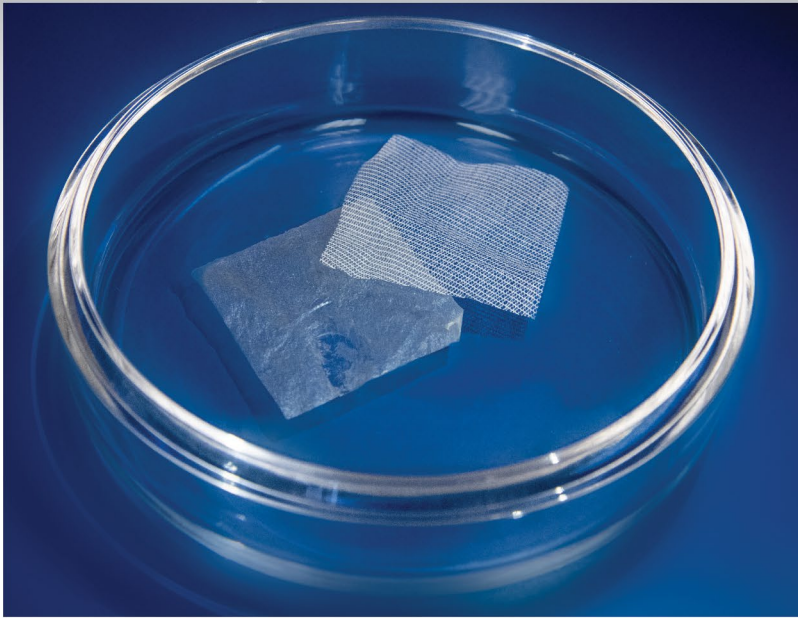


STRATOGEN®
MEMBRANE &
PLUS MEMBRANE
AMNIOTIC TISSUE MATRIX



STRATOGEN® MEMBRANE AND PLUS MEMBRANE

STRATOGEN Membrane and Plus Membrane are regenerative tissue matrices processed from healthy placental tissue of live, cesarean births and may be used as therapeutic grafts for wound covering applications. Placental tissue is known to contain collagen substrates, growth factors, and extracellular matrix proteins involved in the complex wound healing process. The STRATOGEN Plus Membrane is identical to the STRATOGEN Membrane but is crosslinked to provide an extended period of protection.



AMNION FEATURES AND BENEFITS

- Promotes regenerative healing
- Anti-scarring
- Anti-inflammation
- Anti-microbial
- Non-immunogenic
- Crosslinked option available for slower resorption
- 2 year shelf life at ambient conditions

Item # (Membrane)	Item # (Plus Membrane)	Size
BA90-000101	N/A	1 x 1 cm
BA90-000102	BA91-000102	1 x 2 cm
BA90-000202	BA91-000202	2 x 2 cm
BA90-000203	BA91-000203	2 x 3 cm
BA90-000204	BA91-000204	2 x 4 cm
BA90-000206	BA91-000206	2 x 6 cm
BA90-000404	BA91-000404	4 x 4 cm
BA90-000406	BA91-000406	4 x 6 cm
BA90-000408	BA91-000408	4 x 8 cm*
BA90-000808	BA91-000808	8 x 8 cm*

* By Request



A portion of all Biologics proceeds is donated to Smoky Mountain Service Dogs. This non-profit organization is dedicated to helping wounded veterans. Their mission is to enhance the physical and psychological quality of life for veterans with disabilities by providing custom-trained mobility-assistance service dogs. We are proud to partner with such an outstanding organization that gives back to those who served.


ChoiceSpineTM
Propelling Spinal Surgery

400 Erin Drive
Knoxville, TN 37919
865.246.3333 office 865.246.3334 fax
www.ChoiceSpine.com

Lit # Stratogen Membrane SS
REV 01
09/18