



STRATOFUSE[®] MATRIX 01[®]

Cortical Fibers



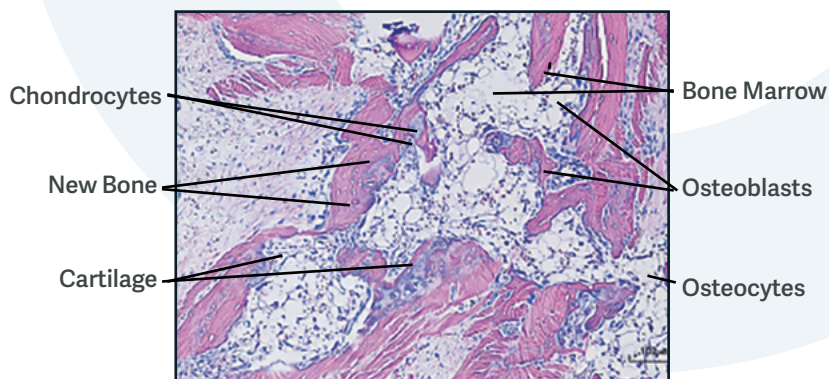


STRATOFUSE® MATRIX OI® Cortical Fibers

Stratofuse® Matrix OI® Cortical Fibers are 3-dimensional fibers derived from 100% human allograft bone. These fibers are processed to maintain the interconnected structure of trabecular bone in a manner that preserves native growth factors. Matrix OI® Cortical Fibers have been histologically proven to contain all five (5) elements of bone formation including new bone, bone marrow, osteocytes, chondrocytes, and cartilage in the athymic rat post-implantation at 28 days.

Featured Benefits

- 100% Allograft Bone, No Carrier
- Shapeable, Moldable Fibers
- High-Wicking Capacity
- 3-D Scaffold Architecture
- Osteoconductive
- Osteoinductive—Every Lot Tested for Osteoinductivity



Sizes Available

- 1cc, 2.5cc, 5cc and 10cc
- 5-Year Shelf Life
- Room Temperature Storage

Item #	Description
445010	STRATOFUSE® Matrix OI Cortical Fibers - Extra Small 1.0cc
445025	STRATOFUSE® Matrix OI Cortical Fibers - Small 2.5cc
445050	STRATOFUSE® Matrix OI Cortical Fibers - Medium 5cc
445100	STRATOFUSE® Matrix OI Cortical Fibers - large 10cc



Visit Biologics Portfolio

Spine the Right Way.™

Distributed by ChoiceSpine LLC
 400 Erin Drive
 Knoxville, TN 37919
 choicespine.com
 865-243-3383
 salessupport@choicespine.com