

STEALTH™

Anterior Cervical Spacer System





choicespine.com

Table of Contents

- Approach 5
- Disc Space Access 5
- Endplate Preparation 5
- Implant Sizing 6
- Implant Insertion 7
- Final Construct 8
- Implant Removal 9
- Instruments 10

STEALTH™

Anterior Cervical Spacer System



Introduction: STEALTH PEEK

The STEALTH™ Anterior Cervical Spacer System consists of intervertebral body fusion devices comprised of PEEK-OPTIMA for patients with degenerative disc disease (DDD). The spacer can be simultaneously inserted with our Boomerang® plate designed to reduce surgical steps. The spacers are available in parallel and 6° lordotic options to accommodate different anatomies.

Features:

- Available in Parallel and 6° lordosis
- Heights: 5mm – 12mm (1mm increments)
- Footprints: 12mm depth x 14mm width, 14mm depth x 16mm width
- Large graft window for bone graft volume
- Prominent teeth for optimizing endplate engagement
- Radiographic markers for fluoro visualization

STEALTH Cervical PEEK Implant



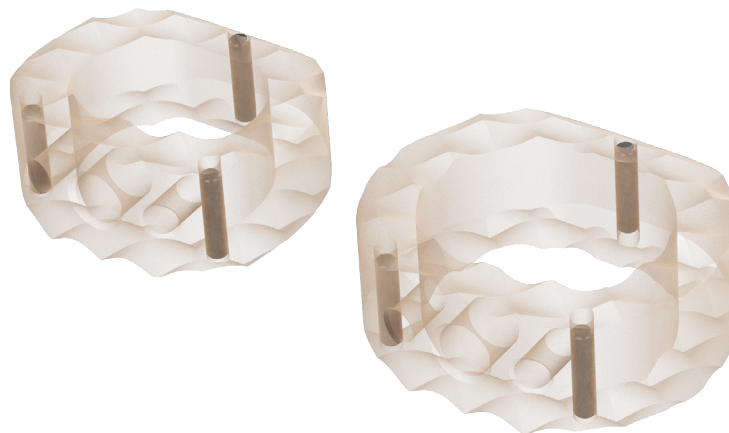
12mm x 14mm

14mm x 16mm

Standard Heights: 5mm-12mm

Standard Lordosis: 0° and 6°

STEALTH Radiographic Pin Locations



Radiographic markers are 1mm from exterior edge of the implant

1. Approach

The patient is positioned and the appropriate anterior incision is made at the affected level(s) (Fig. 1)



Figure 1

2. Disc Space Access

The affected disc material is carefully removed (Fig. 2).



Figure 2

3. Endplate Preparation

The Rasp (D070-0002) and/or other endplate preparation instruments are used to remove the cartilaginous endplate and to prepare the bleeding bone for fusion in the disc space (Fig. 3).



Figure 3

4. Implant Sizing

Select a Trial (D070-XXXXXXX) and sequentially trial until a desired fit within the disc space is achieved (Fig. 4). Refer to the color code on the trial to choose the corresponding disc implant (Fig. 5).



Figure 4



Figure 5

STEALTH Cervical Height Trial Color

Trial footprints 12x14 & 14x16 (0° & 6°) are available in heights ranging from 5mm - 12mm and are identified via the color band (Fig. 5) on the instrument. Trial height and width are equivalent to the implant height and width, respectively. Trial depth is 2 mm longer than the corresponding implant in the AP plane.

	5	Blue
	6	Green
	7	Gold
	8	Magenta
	9	Purple
	10	Aqua
	11	Seafoam
	12	Bronze

5. Implant Insertion

Slide the Inserter Sleeve onto the Inserter (D070-0001). Once the Inserter Sleeve is fully seated on the Inserter, rotate the Inserter Sleeve so it is retained on the Inserter.

Figure 6



Thread the Implant onto the Inserter until fully seated (Fig. 7). The prongs on the end of the Inserter Sleeve should be captured in the holes next to the threaded hole in the center of the implant. Pack the implant with bone graft such as ChoiceSpine's Stratofuse® Biologics.

Figure 7



Insert the implant into the disc space to securely seat it in the final position (Fig. 8). Release the implant from the inserter by rotating counterclockwise and verify placement under fluoroscopy (Fig. 9).



Figure 8



Figure 9

The Tamp (D070-0003) can be used for implant adjustments within the disc space for final placement (Fig. 10).



Figure 10

6. Final Construct

To confirm final position note the position of the radiographic markers under fluoroscopy. Place supplemental fixation, such as ChoiceSpine's Boomerang® Anterior Cervical Plate, after confirming final interbody position (Fig. 11).



Figure 11




Implant Removal

If it becomes necessary to remove the implant, carefully observe the implant position and the presence of any scar tissue, which can make exposure more challenging compared to the unoperated spine. To remove implant, thread the Inserter (D070-0001) onto the implant until it is fully seated to the implant (Fig 12). If the implant cannot be easily removed, a Cobb Elevator or Osteotome should be used to loosen the bone to implant interface.



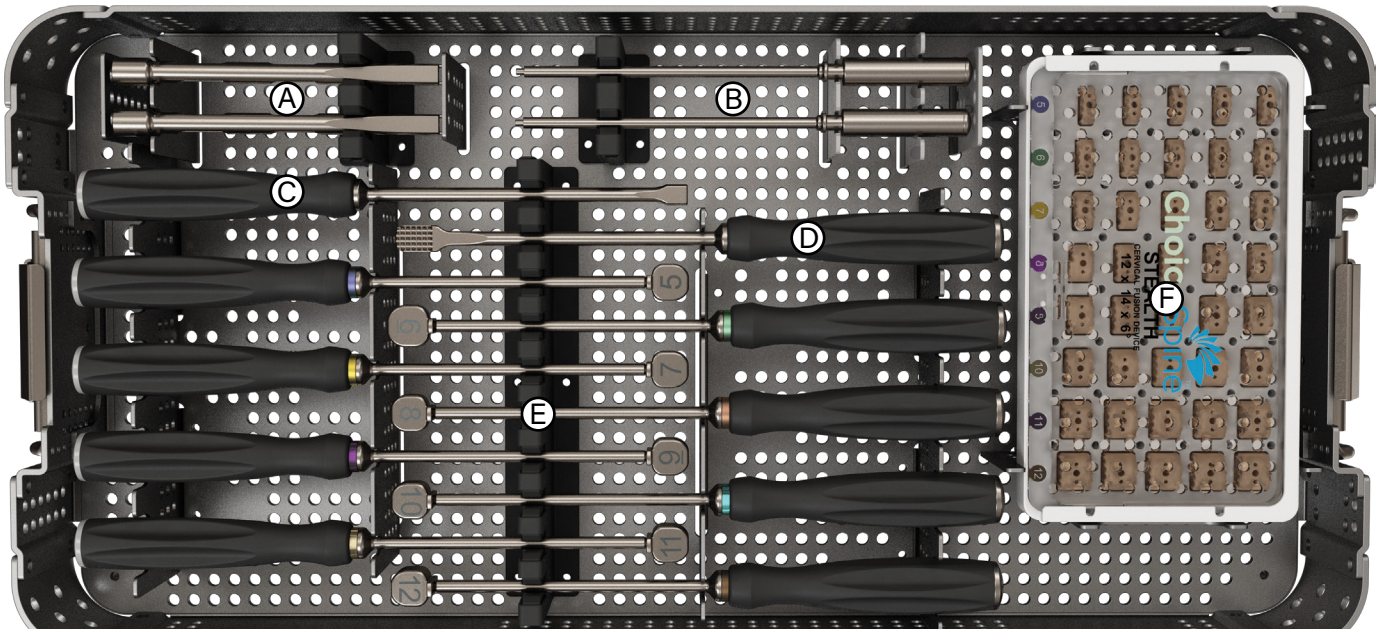
Figure 12

Stealth™ Instruments:

Part Number	Description	
D070-12140XX	12x14xXXmm 0° Parallel	
D070-12146XX	12x14xXXmm 6° Lordotic	
D070-14160XX	14x16xXXmm 0° Parallel	
D070-14166XX	14x16xXXmm 6° Lordotic	
D070-0001	INSERTER & SLEEVE	
D070-0002	RASP	
D070-0003	TAMP	

NOTE: Note: XX in part number denotes the height of the trial from 05-12mm (1mm increments). Optional trials are available without stops.

Stealth Tray



- (A) D070-0001 Inserter Sleeve
- (B) D070-0001 Inserter
- (C) D070-0003 Tamp
- (D) D070-0002 Rasp
- (E) Trials D070-XXXXXXX (5-12mm)
- (F) Stealth Implant Caddy

Stealth Implant Caddy



Stealth Implant Listing

Parallel (0°)

12mm Depth x 14mm Width	
Heights	Catalog No.
5mm	DP10-1214005
6mm	DP10-1214006
7mm	DP10-1214007
8mm	DP10-1214008
9mm	DP10-1214009
10mm	DP10-1214010
11mm	DP10-1214011
12mm	DP10-1214012

14mm Depth x 16mm Width	
Heights	Catalog No.
5mm	DP20-1416005
6mm	DP20-1416006
7mm	DP20-1416007
8mm	DP20-1416008
9mm	DP20-1416009
10mm	DP20-1416010
11mm	DP20-1416011
12mm	DP20-1416012

Lordotic (6°)

12mm Depth x 14mm Width	
Heights	Catalog No.
5mm	DP10-1214605
6mm	DP10-1214606
7mm	DP10-1214607
8mm	DP10-1214608
9mm	DP10-1214609
10mm	DP10-1214610
11mm	DP10-1214611
12mm	DP10-1214612

14mm Depth x 16mm Width	
Heights	Catalog No.
5mm	DP20-1416605
6mm	DP20-1416606
7mm	DP20-1416607
8mm	DP20-1416608
9mm	DP20-1416609
10mm	DP20-1416610
11mm	DP20-1416611
12mm	DP20-1416612



STEALTH™

Anterior Cervical Spacer System

Spine the Right Way.™



400 Erin Drive, Knoxville, TN 37919 | O: 865.246.3333 | F: 865.246.3334 | choicespine.com