

# STEALTH™

Anterior Cervical Spacer System



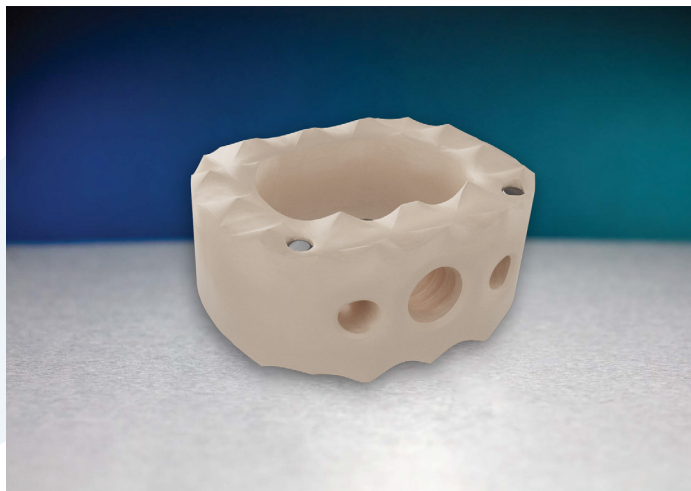
# STEALTH™

## Anterior Cervical Spacer System

The STEALTH™ Anterior Cervical Spacer System consists of intervertebral body fusion devices comprised of PEEK-OPTIMA for patients with degenerative disc disease (DDD). The spacer can be simultaneously inserted with our Boomerang® plate designed to reduce surgical steps. The spacers are available in parallel and 6° lordotic options to accommodate different anatomies.

### Features:

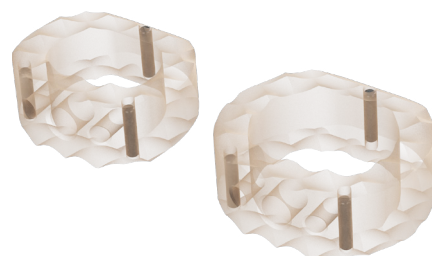
- Available in Parallel and 6° lordosis
- Heights: 5mm – 12mm (1mm increments)
- Footprints: 12mm depth x 14mm width, 14mm depth x 16mm width
- Large graft window for bone graft volume
- Prominent teeth for optimizing endplate engagement
- Radiographic markers for fluoro visualization



Compatible with Boomerang®  
Anterior Cervical Plate



Secure Threaded Inserter



Excellent Visibility Under Fluoroscopy



400 Erin Drive, Knoxville, TN 37919 | O: 865.246.3333 | F: 865.246.3334 | [choicespine.com](http://choicespine.com)