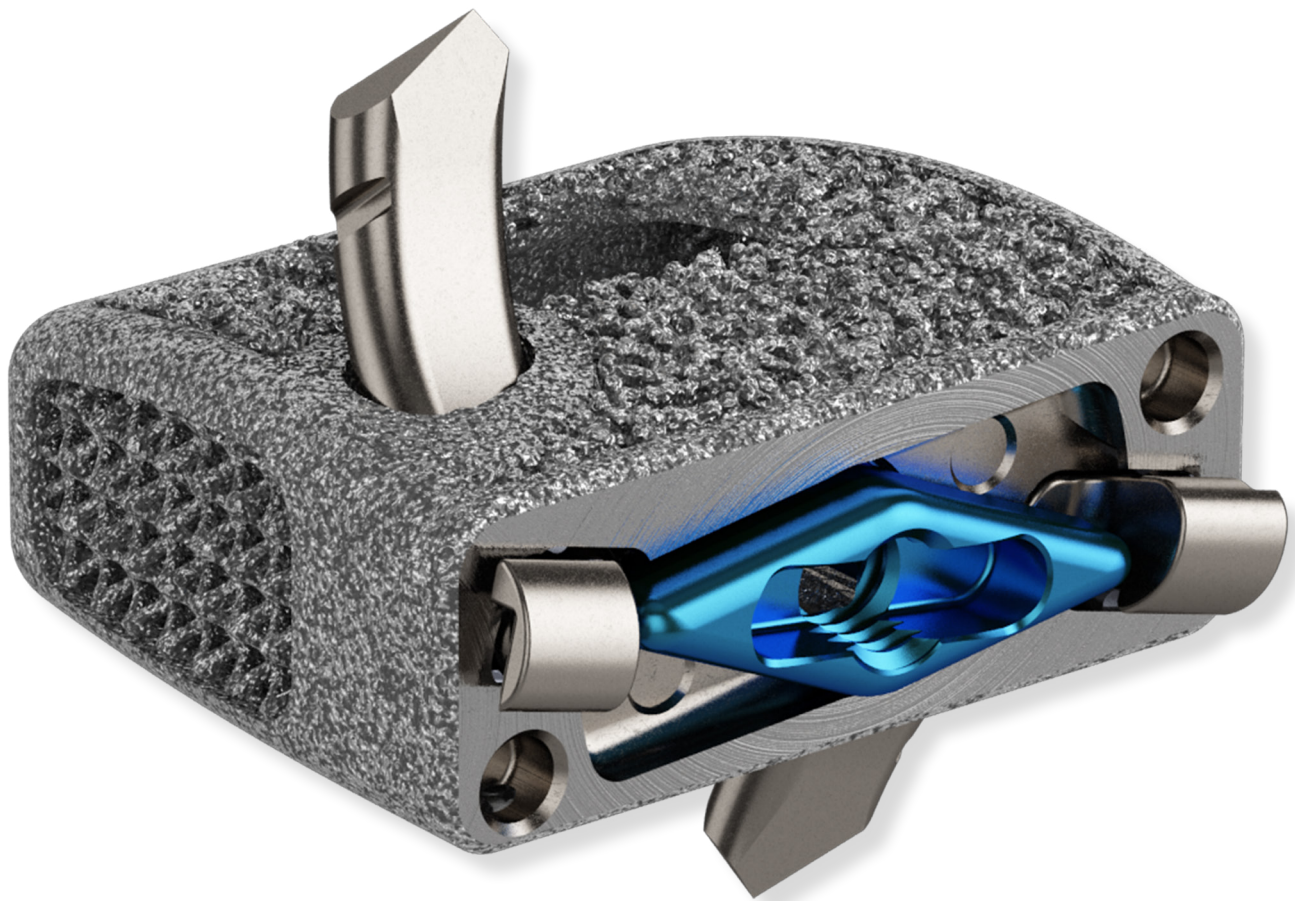


# BLACKHAWK<sup>®</sup> T I

Cervical Standalone Spacer System



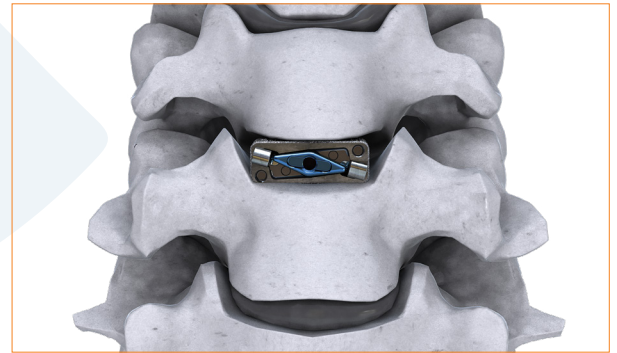
# BLACKHAWK<sup>®</sup> Ti

## Cervical Standalone Spacer System

The ChoiceSpine Blackhawk<sup>®</sup> Ti Cervical Standalone Spacer System is a cervical spacer that has integrated anchors for anterior cervical spinal fusion. The single-step anchor deployment is designed to reduce surgical steps in the operating room. The implant is 3D printed BioBond<sup>®</sup> technology, ChoiceSpine's proprietary porous trabecular structure, and is available in two anatomical footprints. Blackhawk Ti features a cam-locking mechanism that provides visual and tactile confirmation of final locking. The Blackhawk Ti System has standalone indication.

### Features:

- Footprints Available: 14mm x 12mm and 16mm x 14mm, 6mm-10mm heights, 6 degrees and convex
- Large open graft window for bone graft and visualization under fluoroscopy
- 4.8mm – 5.5mm anchor deployment depth
- Simultaneous, single-step anchor deployment
- Cam-locking mechanism provides visual and tactile confirmation



### Excellent Visibility Under Fluoroscopy



Convex



Lordotic

### Multiple Footprints



14W X 12D



16W X 14D



400 Erin Drive, Knoxville, TN 37919 | O: 865.246.3333 | F: 865.246.3334 | [choicespine.com](http://choicespine.com)