

BLACKBIRDTM

Posterior Cervical-Thoracic
Spinal Fixation System

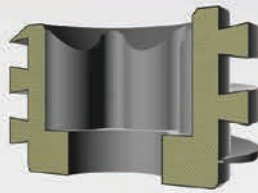
BLACKBIRD™

Posterior Cervical-Thoracic Fixation System

The **ChoiceSpine Blackbird Posterior Cervical-Thoracic Fixation System** is a Ø3.5mm rod system offering a versatile and simplified solution for posterior fixation of the cervico-thoracic regions of the spine.

FEATURES

- 70° polyaxial range of motion
- Dovetail set screw minimizes head splay and cross threading
- Comprehensive and simple instrumentation including multiple options for rod insertion



Rod to Rod Connectors

- Small (30-35mm)
- Medium (34-44mm)
- Large (43-58mm)



Lateral Connectors

- Sizes from 14-20mm in 2mm increments



Hooks

- 5mm and 6mm hooks



Rods

- Ø3.5mm straight and pre-bent rods
- Ø3.5-Ø5.5mm transition



Inline Connectors

- Ø3.5-Ø5.5mm
- Ø3.5-Ø6.0mm



Domino Connectors

- Ø3.5-Ø5.5mm
- Ø3.5-Ø6.0mm



Fully Threaded Screws

- 3.5 and 4.0mm diameter screws ranging from 10-32mm in 2mm increments
- 4.5mm diameter screws ranging from 18-34mm in 2mm increments



Smooth Shank Screws

- 3.5mm diameters
- 18-22mm in 2mm increments


ChoiceSpine™
Propelling Spinal Surgery

400 Erin Drive | Knoxville, TN 37919
865.246.3333 | fax 865.246.3334
choicespine.com