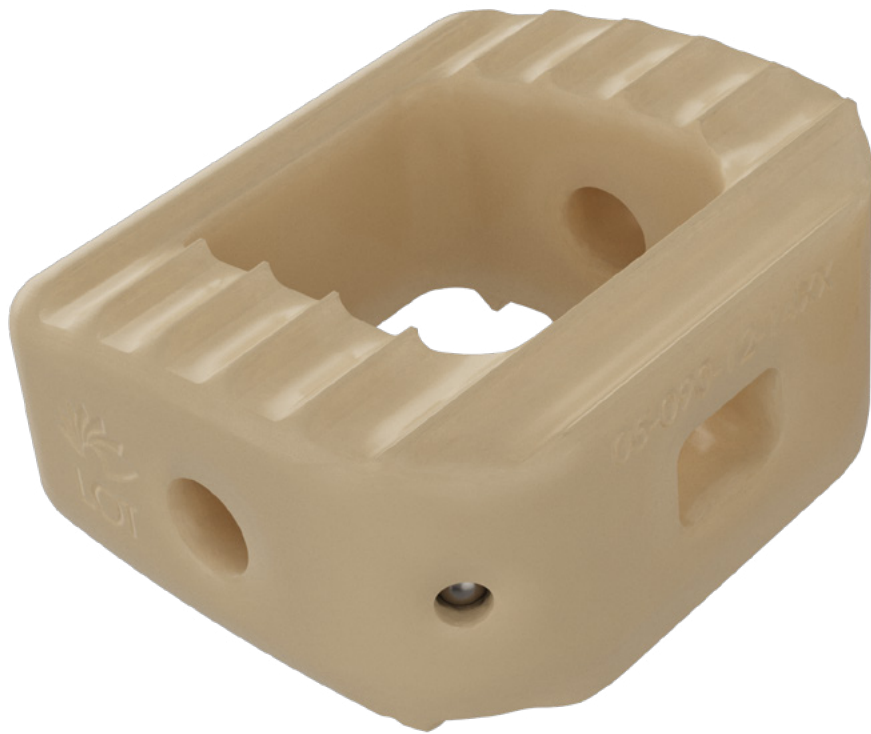


ASCENDANT[®] PEEK

Anterior Cervical Spacer System



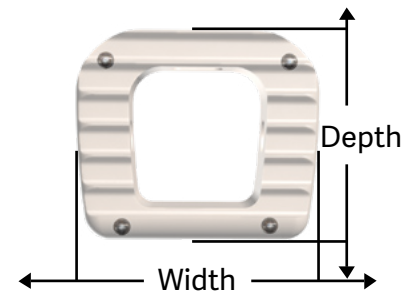
ASCENDANT[®] PEEK

Anterior Cervical Spacer System

The Ascendant[®] PEEK Anterior Cervical Spacer System is an anterior cervical discectomy and fusion device offered in pure PEEK Optima[®]. It is offered in a variety of heights, footprints, and lordosis profiles to accommodate varying patient anatomy's. Ascendant PEEK features a large graft opening for bone graft material.

Features:

- PEEK-OPTIMA[®] for radiolucency
- Two footprints: 12Dx14W & 14Dx16W
- Three sagittal profiles: 6° lordotic, parallel, and convex. Heights available in 5mm to 12mm in 6 degree lordotic, parallel and convex
- Large Graft Window
- Simple Instrumentation
- Angular teeth designed to prevent spacer migration



Height (mm)	12 x 14mm Parallel	12 x 14mm 6° Lordotic	12 x 14mm Convex	14 x 16mm Parallel	14 x 16mm 6° Lordotic	14 x 16mm Convex
	Graft Volume (CC)					
4	0.238		0.158	0.380		0.273
5	0.298	0.149	0.204	0.475	0.253	0.350
6	0.357	0.208	0.251	0.570	0.348	0.426
7	0.417	0.267	0.297	0.664	0.442	0.503
8	0.476	0.326	0.344	0.759	0.536	0.579
9	0.536	0.385	0.390	0.854	0.631	0.656
10	0.595	0.444	0.437	0.949	0.725	0.732
11	0.655	0.503	0.484	1.044	0.820	0.809
12	0.714	0.562	0.530	1.139	0.914	0.886



400 Erin Drive, Knoxville, TN 37919 | O: 865.246.3333 | F: 865.246.3334 | choicespine.com