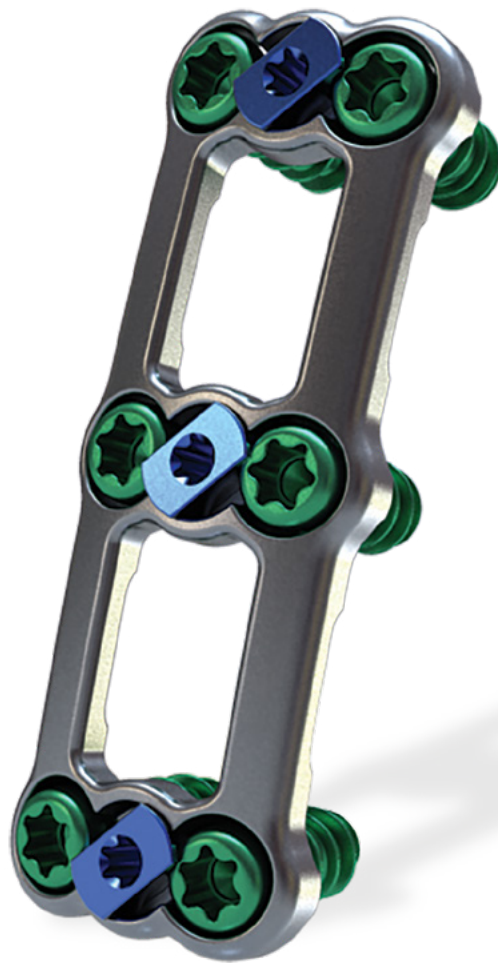


AMBASSADOR[®]

Cervical Plate System



ChoiceSpine[™]

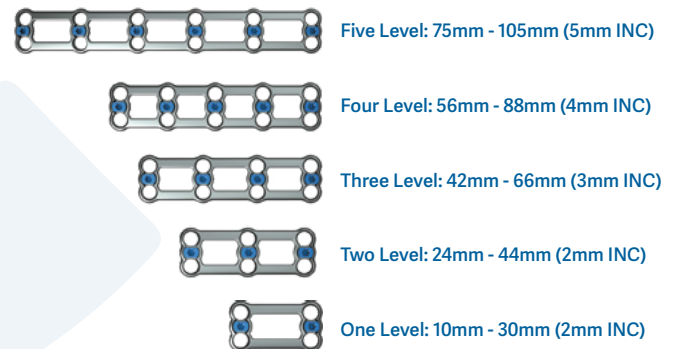
AMBASSADOR®

Cervical Plate System

The Ambassador® Anterior Cervical Plate system is a versatile system of implants and instruments with a variety of sizes to provide optimal anatomic compatibility. The integrated cam-locking mechanism is designed to prevent screw backout. Ambassador features a thin (1.9mm) and narrow (16mm at the widest point) plate profile. The system includes 4.0mm and 4.5mm color-coded screws, variable angle screws and fixed angle screws.

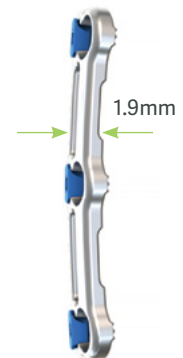
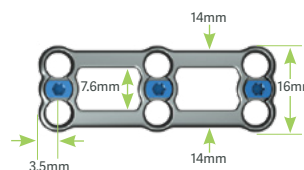
Plate Features

- Thin 1.9mm plate profile
- Plate curvature allows for a fit with the natural lordosis of the spine
- Large window for optimal visualization
- Optimized screw purchase
- Narrow plate profile—16mm at widest point
- Cam-Locking mechanism allows for tactile, audio and visual confirmation of screw locking

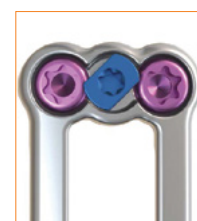


Screw Features

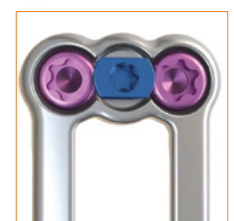
- 4.0mm and 4.5mm screws
 - Color-coded screws to identify diameter and style
- Variable angle screws
 - Cranial/Caudal: 46° Range of Motion
 - Medial/Lateral: 36° Range of Motion
 - Self-Drilling and Self-Tapping Screws
- Fixed angle screws
 - Cranial/Caudal: 9° Range of Motion
 - Medial/Lateral: 15° Range of Motion



0°
Disengaged



45°
Engaged



90°
Engaged

Note: Cam locking achieved between 45°-90°



400 Erin Drive, Knoxville, TN 37919 | O: 865.246.3333 | F: 865.246.3334 | choicespine.com