

STRATOFUSETM SPONGE

100% DEMINERALIZED CANCELLOUS BONE

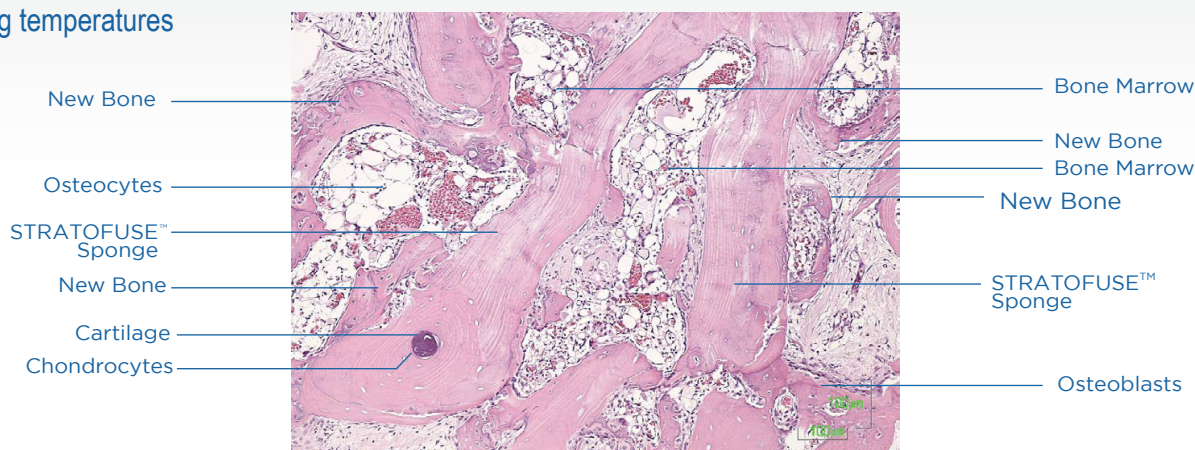


STRATOFUSE™ SPONGE

STRATOFUSE™ Sponge is a compressible matrix derived from 100% allograft bone. It is processed using a proprietary method that maintains the interconnected structure of trabecular bone in a manner that preserves native bone morphogenetic proteins. The clinician may hydrate it with the patient's own stem cells, BMA, growth factors, PRP, or other cellular components in accordance with the physician's medical judgment.

FEATURES AND BENEFITS

- Osteoinductive: each lot is tested in-vivo
- Osteoconductive
- Ambient storage and shipping temperatures
- Resists migration
- Hydrates in minutes
- Five year shelf life
- Sterile: SAL 10⁻⁶



Item #	Description
BA30-101010	STRATOFUSE™ Sponge, 10x20x10mm
BA30-121212	STRATOFUSE™ Sponge, 12x12x12mm
BA30-141414	STRATOFUSE™ Sponge, 14x14x14mm
BA30-501007	STRATOFUSE™ Sponge, 50x10x07mm
BA30-502007	STRATOFUSE™ Sponge, 50x20x07mm
BA30-261907	STRATOFUSE™ Sponge, 26x19x07mm
BA30-201010	STRATOFUSE™ Sponge, 20x10x10mm
BA30-500705	STRATOFUSE™ Sponge, 50x07x05mm
BA30-201507	STRATOFUSE™ Sponge, 20x15x07mm
BA30-251007	STRATOFUSE™ Sponge, 25x10x07mm



A portion of all Biologics proceeds is donated to Smoky Mountain Service Dogs. This non-profit organization is dedicated to helping wounded veterans. Their mission is to enhance the physical and psychological quality of life for veterans with disabilities by providing custom-trained mobility-assistance service dogs. We are proud to partner with such an outstanding organization that gives back to those who served.



400 Erin Drive
Knoxville, TN 37919
865.246.3333 office 865.246.3334 fax
www.ChoiceSpine.com

Lit # Stratofuse Sponge SS
REV 01
06/17