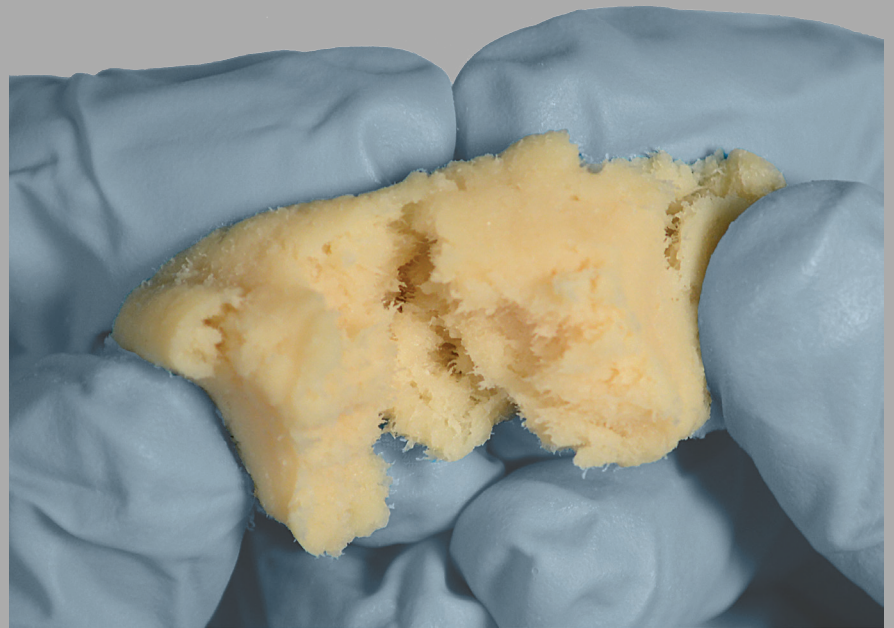


STRATOFUSE™ FIBER PUTTY

100% DEMINERALIZED BONE MATRIX



STRATOFUSE™ FIBER PUTTY

STRATOFUSE™ Fiber Putty is a unique and versatile bone void filler comprised of 100% demineralized allograft bone with cortical fibers woven in, offering surgeons superior handling characteristics.



STRATOFUSE™ Fiber Putty provides superior handling over traditional putty due to the fibrous connection and a proprietary allograft carrier. It is also formable and flowable, but resists irrigation. A unique processing method eliminates the need for extrinsic organic carriers that have no bioactivity or biological function while also preserving and exposing endogenous growth factors found in bone. Cortical fibers increase the surface area available for cellular attachment and proliferation potential, providing an excellent bone grafting option for surgeons.

FEATURES AND BENEFITS

- 100% Demineralized allograft bone, no carrier
- Formable and irrigation resistant
- Osteoconductive
- Osteoinductive potential
- Two year shelf life
- Sterile: SAL 10^{-6}

Item #	Description	
BA21-000001	STRATOFUSE™ Fiber Putty,	1.0cc
BA21-000002	STRATOFUSE™ Fiber Putty,	2.5cc
BA21-000005	STRATOFUSE™ Fiber Putty,	5.0cc
BA21-000010	STRATOFUSE™ Fiber Putty,	1 0cc



A portion of all Biologics proceeds is donated to Smoky Mountain Service Dogs. This non-profit organization is dedicated to helping wounded veterans. Their mission is to enhance the physical and psychological quality of life for veterans with disabilities by providing custom-trained mobility-assistance service dogs. We are proud to partner with such an outstanding organization that gives back to those who served.



400 Erin Drive
Knoxville, TN 37919
865.246.3333 office 865.246.3334 fax
www.ChoiceSpine.com

Lit # Stratofuse Fiber Putty SS
REV 01
06/17