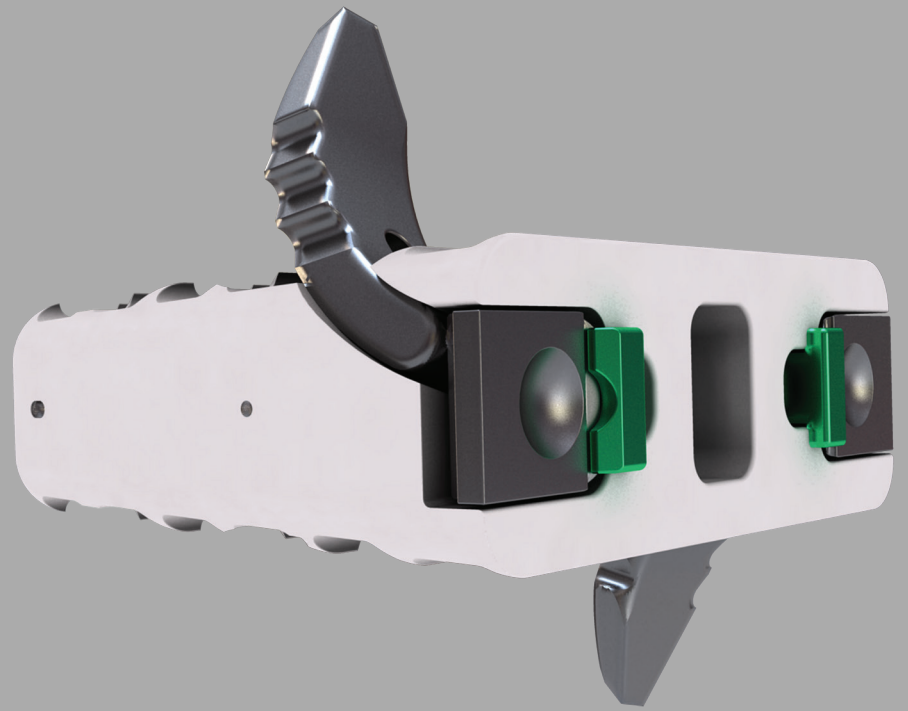


BLACKHAWKTM
SELF-LOCKING CERVICAL SPACER



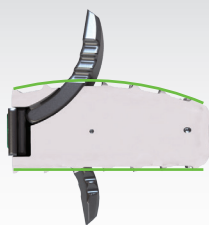
BLACKHAWK™

Blackhawk™ is a versatile self-locking anterior cervical spacer system designed to meet varying patient anatomy. Featuring an integrated, visual self-locking mechanism, Blackhawk was created for quick and secure anterior cervical fusion surgery.

System Features

- 6 heights available: 5mm-10mm
- 3 profiles available: Lordotic (6°), Parallel, Convex
- Radiographic markers designed to aid in confirming final positioning
- 2 footprints: 14Wx12D & 16Wx14D
- Wide 2.9mm anchors with aggressive tooth profile
- Visual lock confirmation
- Large graft area

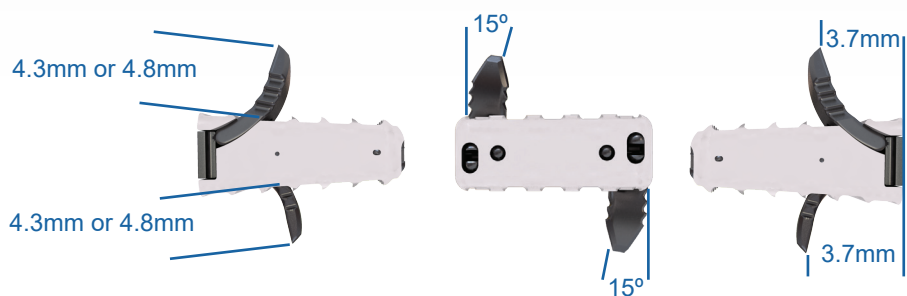
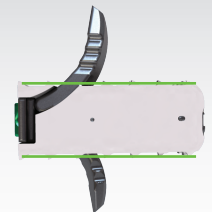
Convex



Lordotic



Parallel



Blackhawk Catalog Number	Size (mm) Depth x Width	Anterior Height	Posterior Height (mm)	Posterior Height	Graft Vol. (cc)
Parallel					
05-090-22-1405	12x14	5	5	5	0.25
05-090-22-1406	12x14	6	6	6	0.30
05-090-22-1407	12x14	7	7	7	0.35
05-090-22-1408	12x14	8	8	8	0.40
05-090-22-1409	12x14	9	9	9	0.45
05-090-22-1410	12x14	10	10	10	0.50
05-090-22-1605	14x16	5	5	5	0.42
05-090-22-1606	14x16	6	6	6	0.50
05-090-22-1607	14x16	7	7	7	0.58
05-090-22-1608	14x16	8	8	8	0.66
05-090-22-1609	14x16	9	9	9	0.75
05-090-22-1610	14x16	10	10	10	0.83
Lordotic					
05-090-21-1405	12x14	5	5	3.7	0.24
05-090-21-1406	12x14	6	6	4.7	0.29
05-090-21-1407	12x14	7	7	5.7	0.33
05-090-21-1408	12x14	8	8	6.7	0.38
05-090-21-1409	12x14	9	9	7.7	0.43
05-090-21-1410	12x14	10	10	8.7	0.48

Blackhawk Catalog Number	Size (mm) Depth x Width	Anterior Height	Posterior Height (mm)	Posterior Height	Graft Vol. (cc)
Convex					
05-090-21-1605	14x16	5	5	3.7	0.41
05-090-21-1606	14x16	6	6	4.7	0.49
05-090-21-1607	14x16	7	7	5.7	0.58
05-090-21-1608	14x16	8	8	6.7	0.66
05-090-21-1609	14x16	9	9	7.7	0.74
05-090-21-1610	14x16	10	10	8.7	0.82
05-090-23-1605	12x14	5	5.5	4	0.26
05-090-23-1606	12x14	6	6.5	5	0.31
05-090-23-1607	12x14	7	7.5	6	0.36
05-090-23-1608	12x14	8	8.5	7	0.41
05-090-23-1609	12x14	9	9.5	8	0.46
05-090-23-1610	12x14	10	10.5	9	0.51
05-090-23-1405	14x16	5	5.5	4	0.44
05-090-23-1406	14x16	6	6.5	5	0.52
05-090-23-1407	14x16	7	7.5	6	0.60
05-090-23-1408	14x16	8	8.5	7	0.68
05-090-23-1409	14x16	9	9.5	8	0.77
05-090-23-1410	14x16	10	10.5	9	0.85



400 ERIN DRIVE
KNOXVILLE, TN 37919
865.246.3333 OFFICE 865.246.3334 FAX
WWW.CHOICESPINE.COM

Lit # Blackhawk SS
REV 00
11/17