

BLACKBIRDTM

CERVICAL-THORACIC SPINAL FIXATION SYSTEM



BLACKBIRD™



Fully Threaded Screws

3.5	4.0	4.5
LT10-3510	LT10-4010	LT10-4518
LT40-P040	LT10-4012	LT10-4520
LT10-3512	LT10-4014	LT10-4522
LT40-P050	LT10-4016	LT10-4524
LT10-3514	LT10-4018	LT10-4526
LT40-P060	LT10-4020	LT10-4528
LT10-3516	LT10-4022	LT10-4530
LT40-P070	LT10-4024	LT10-4532
LT10-3518	LT10-4026	LT10-4534
LT40-P080	LT10-4028	
LT10-3520	LT10-4030	
	LT10-4032	



Smooth Shank Screws

3.5
LT20-3518
LT20-3520
LT20-3522

The ChoiceSpine BLACKBIRD Spinal System is a posterior spinal fixation system composed of 3.5mm & 4.0mm polyaxial screw in 10-32mm increments as well as 4.5mm polyaxial screws in 18-32mm lengths. 3.5mm smooth shank polyaxial screws are also available. Standard rod options are 3.5mm straight, pre-bent, and transition. Connectors include Rod to Rod, Lateral Offset, and Rod Transition Connectors. Multiple Hook sizes are included.



Rod to Rod Connectors

LT30-R3035: S(30-35mm)
LT30-R3444: M(34-44mm)
LT30-R4358: L(43-58mm)



Lateral Connectors

LT30-H05
LT30-H06
LT30-SL14
LT30-SL16
LT30-SL18
LT30-SL20

Multiple Screw Options

The Blackbird Spinal System offers fully threaded screws for and smooth shank screws.

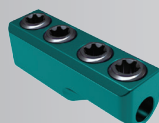
Fully Threaded Screws
range from Ø4.0 10-32mm
and Ø4.5 18-34mm

Smooth Shank Screws
range from Ø3.5 18-22mm

Connectors

A variety of connectors are included in the Blackbird Spinal System. Rod to rod, lateral offset, inline, and domino connectors are all available.

- Inline: 3.5 - 5.5mm
- Domino: 3.5 - 6.0mm



Inline



Domino

System Features

- Polyaxial Head:
Non-biased 70° of conical angulation
- Multiple Screw Options:
3 diameters; fully threaded and smooth shank
- Dovetail Set Screw:
Minimizes head splaying and cross-threading
- Variety of Connectors:
Allows for variations in anatomy and technique

ChoiceSpine™
Propelling Spinal Surgery

400 ERIN DRIVE
KNOXVILLE, TN 37919
865.246.3333 OFFICE 865.246.3334 FAX
WWW.CHOICESPINE.COM

Lit # Blackbird SS
REV 02
1/18